



Rogue River Organics
Talent, OR 97540

Sample 150-100623-234
Apple jelly (THCA Hemp Flower)

Batch/Lot #AT645.173

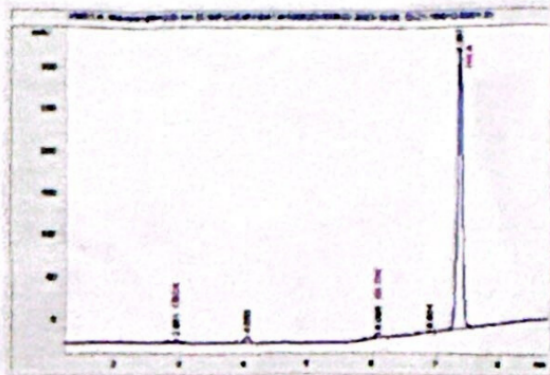
Sample Submitted: 10-06-2023; Report Date: 10-07-2023

Batch/Lot # AT645.173

Apple Jelly(THCA Hemp Flower)

Plant Material: Flower

Chromatogram



Cannabinoid Profile



Cannabinoid Profile by HPLC

0.28%
Delta-9-THC

0.00%
CBD

20.21%
Total Cannabinoids

Cannabinoid	% wt	mg/g
CBGA	0.261	2.61
Delta-9-THC	0.279	2.79
THCA	19.67	196.72
Total Cannabinoids	20.21	202.1
Calculated Total THC	17.53	175.31
Calculated CBD Yield	0.00	0.00

Calculated Total THC = Delta-9-THC + 0.877*THCA
Calculated Maximum CBD Yield = CBD + 0.877 CBDA

Marin Analytics, LLC
250 Bel Marin Keys Blvd, Suite D4
Novato, CA 94949

833-321-TEST/info@marinanalytics.com

Sara Biancalana
Sara Biancalana
Chief Scientist